

# Transforaminal Lumbar Interbody Fusion Cage (TLIF)

## Product Information

### Implant

REF. NO.	Product Description	Height (mm)	Angle
091720007	TLIF Cage, Peek	7	0°
091720009	TLIF Cage, Peek	9	5°
091720011	TLIF Cage, Peek	11	5°
091720013	TLIF Cage, Peek	13	5°
091720015	TLIF Cage, Peek	15	5°

## Transforaminal Lumbar Interbody Fusion Cage (TLIF)



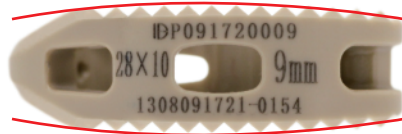
990100010

**DOUBLE ENGINE MEDICAL MATERIAL CO., LTD.**

No. 218 Houxiang Road, Haicang District,  
Xiamen 361022, P. R. China  
Tel: +86 592 6087101 Fax: +86 592 6587078  
E-mail: [info@double-engine.com](mailto:info@double-engine.com)  
Website: [www.double-engine.com](http://www.double-engine.com)



**Anatomical Design**



**Optimal Condition for Fusion**

- PEEK-OPTIMA® material is biocompatible and much closer to that of spongy bone, consequently minimizing the risk of systemic uptake and local inflammatory reactions.
- Roughened surface promotes integration and bone ongrowth.



Lordotic angle 5° to restore the natural lordotic curve (except for 7mm height).

Bullet nose design for self-distracting allows for ease of insertion.

Self-leading rails design on the surface to guide and turn the cage into the desired position.

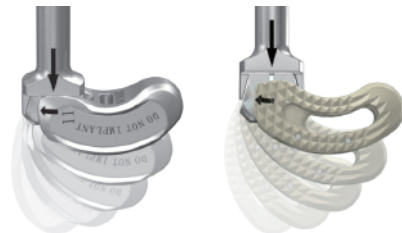
Two X-ray markers help to visualize the implant under radiographic control.

Connecting post permits the pivoting mechanism in combination with the applicator.

Large axial window accommodates more autogenous bone graft in additional groove (except for 7mm/9mm height).

**TLIF Applicator**

- One applicator for insertion of implant and trials
- Applicator allows a controlled and guided insertion based on the pivoting option
- Applicator is designed for minimally invasive surgeries



**Intended Use**

The TLIF implant is intended to replace lumbar intervertebral discs and to fuse the adjacent vertebral bodies together at vertebral levels L1–S1. The TLIF implant is designed for a transforaminal approach.

**Indications**

Indications are lumbar and lumbosacral pathologies in which segmental spondylolysis is indicated, for example:

- Degenerative disc diseases and spinal instabilities
- Revision procedures for post-discectomy syndrome
- Pseudarthrosis or failed spondylolysis
- Degenerative spondylolisthesis
- Isthmic spondylolisthesis

**Contraindications**

- Vertebral body fractures
- Spinal tumors
- Major spinal instabilities
- Primary spinal deformities
- Osteoporosis

**Warning**

This flyer is just for understanding the specific product features. For clinical usage, please refer to the surgical guide. Instruction by experienced surgeon is highly recommended.



PEEK-OPTIMA® and Invivo® are registered trademarks of Invivo Ltd. All rights reserved.

www.invivo.com